

Specifications

Model	RK-3D	RK-3E
Motor	400W Single Phase 230V	
rpm	50/60Hz : 0~250rpm	
Drive	Direct Drive	
Control	Electronic with Fixed Foot Pedal and Hand Lever	Remote Controlled Foot Pedal
Direction	Clockwise/Counter-clockwise	
Free spinning	available at 0 rpm	
Wheelhead	Cast Aluminum, 300mm Diameter	Cast Aluminum, 350mm Diameter
Dimensions	525×582×515mm	600×702×580mm(maximum)
Ship Weight	45kg	42.5kg
Standard Accessory	Two-piece Splasu Pun	

* The motor of RK-3D/3E is available in other voltage also,so please contact us.

* We also have a RK-3D model with 400mm table. Except you cannot install the splash pun and splashguard. It also does not attach with 300mm table.

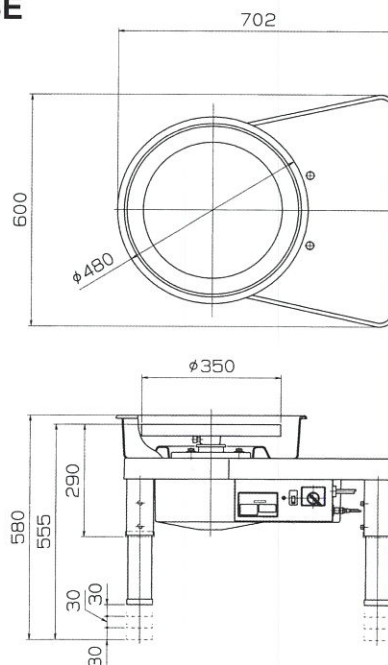
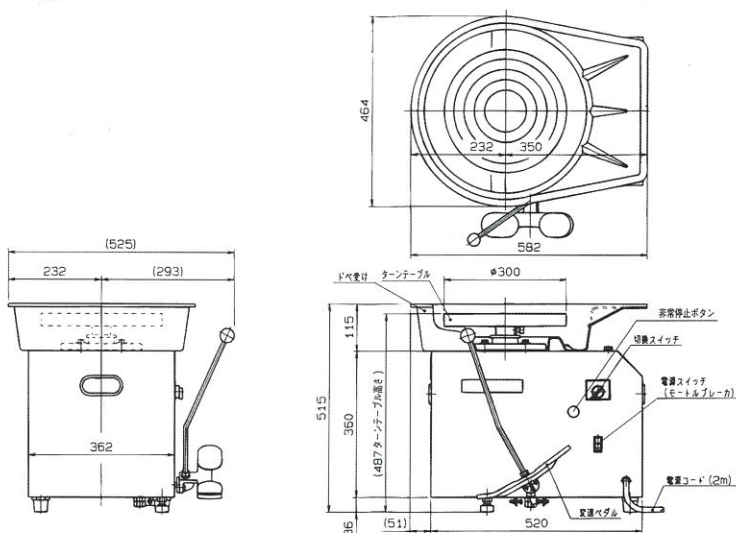
Caution

Please read the entire instruction manual thoroughly before initial set-up and operation; the information contained herein will aid you in operating your shimpo wheel safely and with excellent result.

Dimensions

■RK-3D

■RK-3E



SHIMPO All for dreams

NIDEC-SHIMPO CORPORATION

:1 Terada Kohtari, Nagaokakyo-city, Kyoto,617-0833 Japan
Phone: 81-75-958-3608 FAX: 81-75-958-3647

A **Nidec** Group Company

WA-1004010